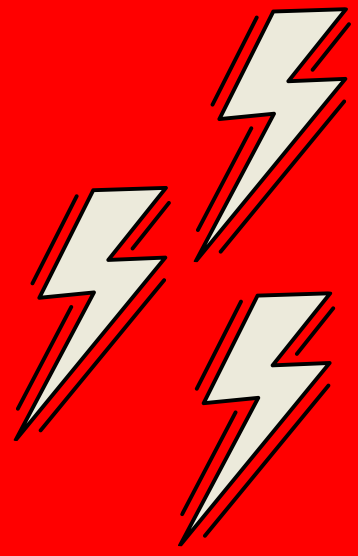


FOCUS GROUP

*Special
Olympics
Ontario*





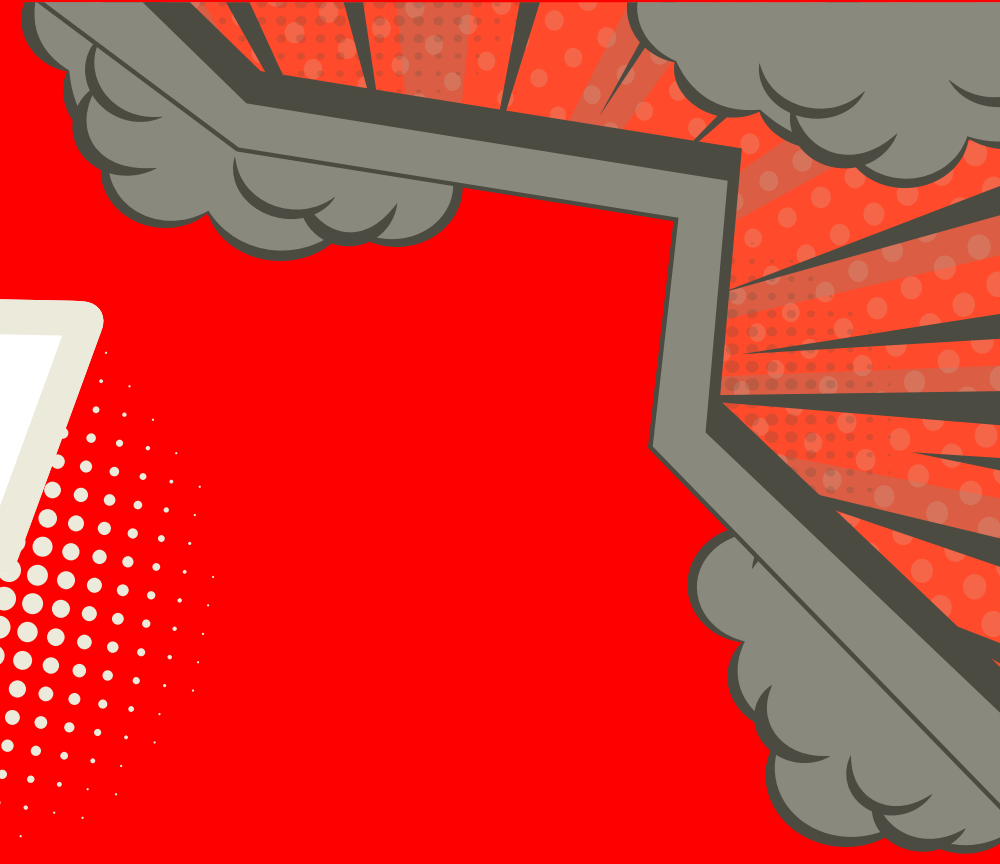
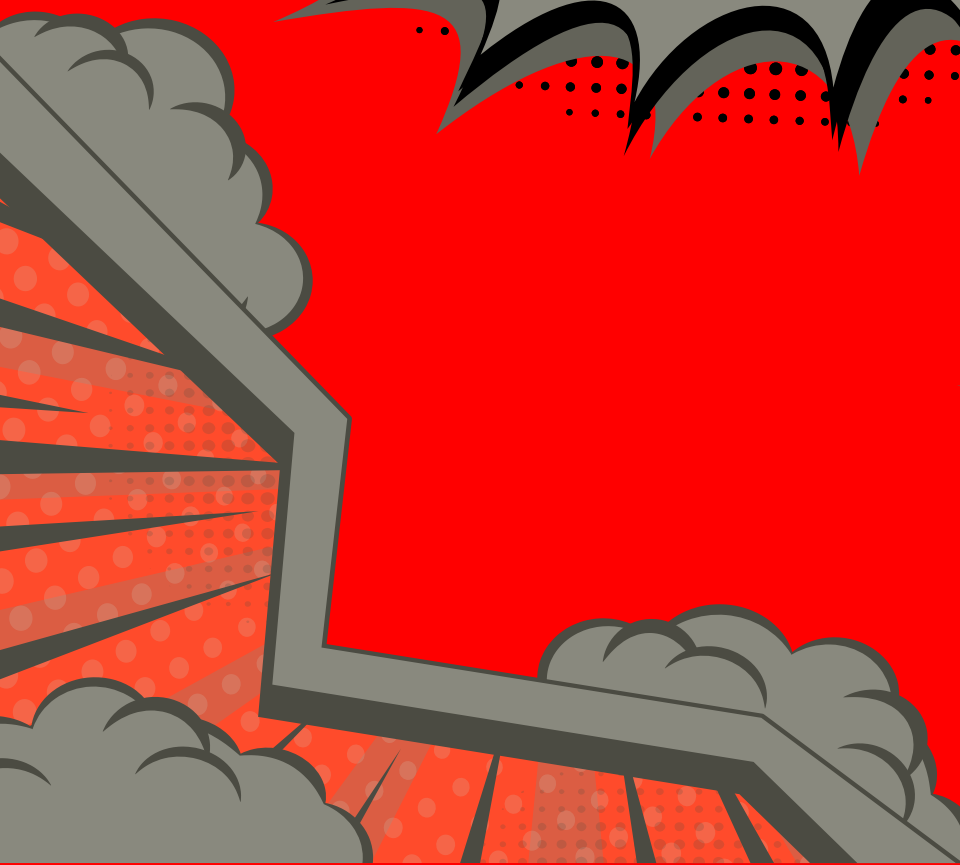
WHAD'YA THINK?

Athlete
Leadership

Transition

District
Committees

Alternative
Programs



ATHLETE LEADERSHIP

How do you solicit
and use
athlete input?

What does athlete
leadership look
like in your
community?

Did you know you
have an OALC
regional rep?

Big Picture:
Athlete
Leadership



TRANSITION

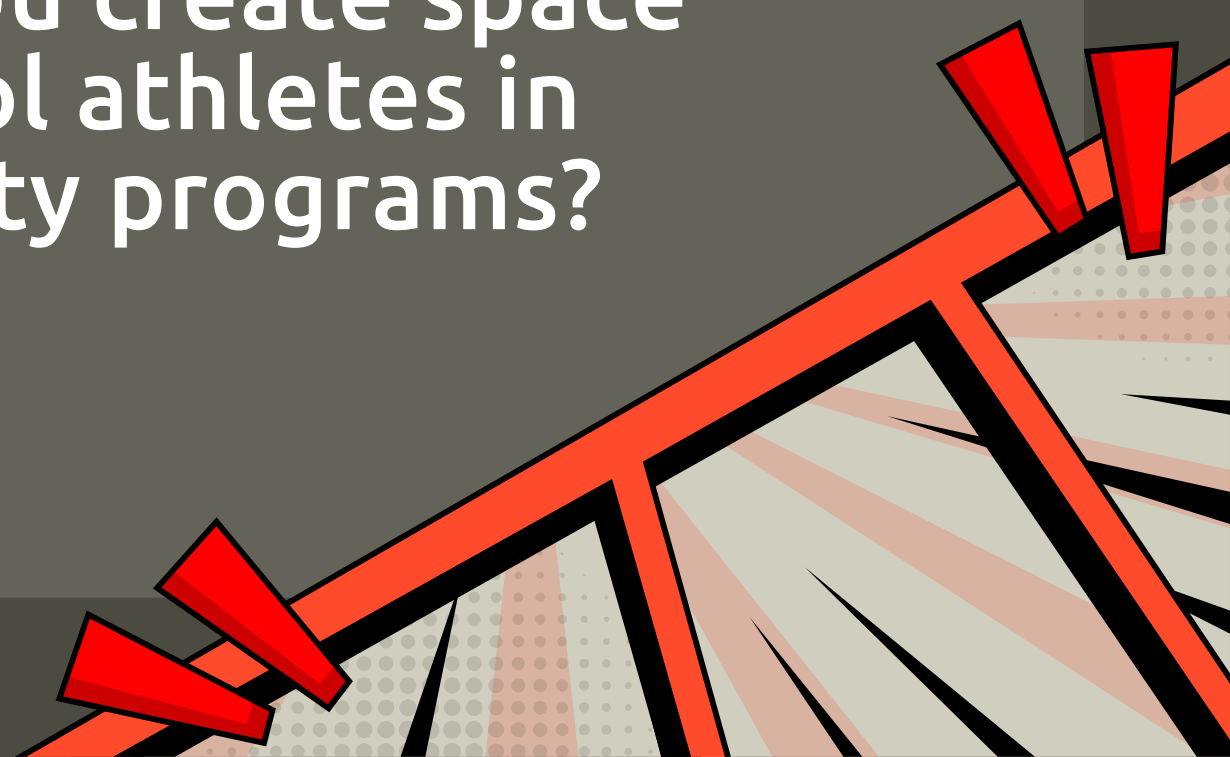
Do you have relationships with schools in your community?

Would you be interested in starting young athlete programs?



Do you have athletes or unified partners that have transitioned into your community?

How can you create space for school athletes in community programs?



DISTRICT COMMITTEES

Do you know the
term: RCMT? L

Which area(s) of
should be within a D
Committee's purvi

**HELP
WANTED!**

How could a District-wide
approach assist with
growth?

What leadership roles
should exist on a
District level?



ALTeRATIVE PRGRAMS

Do you have any in
your community?

Do you connect
with any disability
groups?

Are you connected
to a local sport
council?

Do you partner
with any generic
sport clubs?



FINAL THOUGHTS



**THANK
YOU**

